

## Commercial Gas Charbroiler



**BR-48**

PROJECT:

ITEM NUMBER:

MODEL NUMBER:

### SPECIFICATIONS FOR: BR24, BR36, BR48

- **Size:** Available in 3 sizes. BR24 is 24", BR36 is 36", and BR48 is 48".
- **Finish:** Heavy Duty 10 gauge stainless steel radiants for consistent heat distribution and non clog burner protection
- **Hardware:** High performance stainless steel U style burners, 4" backsplash and sidesplash protection against grease spatters, removable and easy to clean grease catch pan, extended cool to touch front edge, temperature knobs with set screws, adjustable non-skid stainless steel legs
- **Connections:** Pressure regulator is provided with the unit; LP conversion kit is included
- Pressure for Natural Gas- 4" Propane -10", Gas connection is 3/4" NPT (19mm) rear gas connection
- **Instrumentation:** Pilots with front access
- **Approvals:** ETL

### STANDARD FEATURES

- LP conversion kit included
- Available with 2, 3 or 4 burners, each with 35,000 BTU
- Available in 24", 36" or 48" widths
- High performance and efficient stainless steel U style burners provide flame every 6" on griddle surface
- Heavy Duty stainless steel radiants
- Cast Iron cooking racks, reversible
- Extended cool to touch front edge
- Wide front grease trough
- Removable, easy to clean stainless grease catch pan
- Large temperature knobs with set screws
- Pilots with front access
- 1 Year Parts & Labor
- ETL

### WARRANTIES



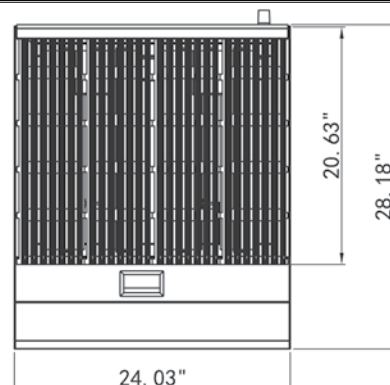
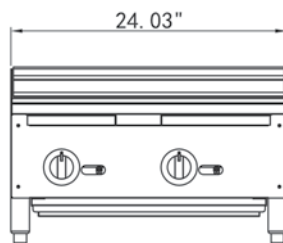
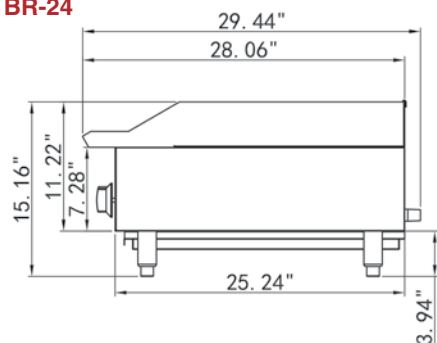
Parts & Labor

\*\* C-UL is Underwriters Laboratories Safety Certification Mark which indicates that UL has tested the equipment to applicable CSA Standards.

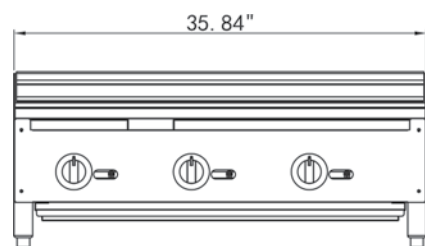
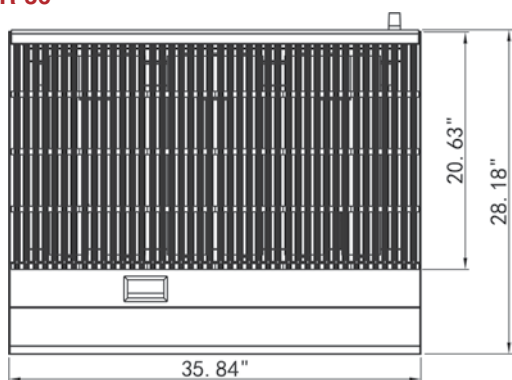
\*\* UL-Sanitation is Underwriters Laboratories Safety Certification Mark which indicates that UL has tested the equipment to applicable NSF Standards.



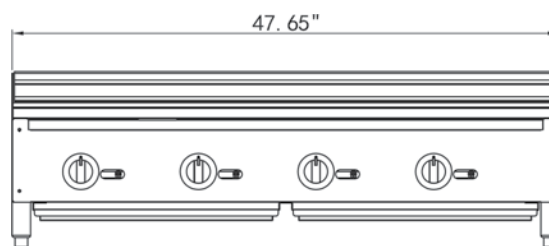
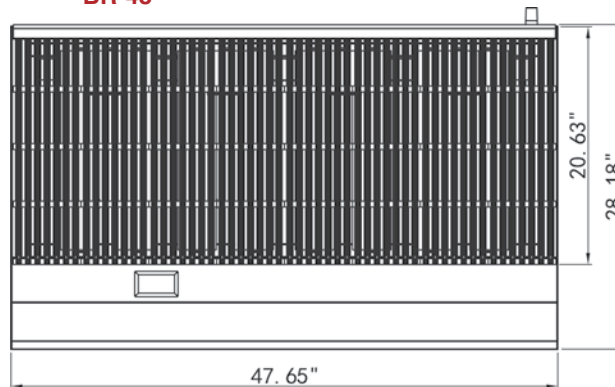
**BR-24**



**BR-36**



**BR-48**



## SPECIFICATIONS

| Models              | BR-24  | BR-36   | BR-48   |
|---------------------|--------|---------|---------|
| Burners             | 2      | 3       | 4       |
| Cooking Area Length | 21.25  | 21.25   | 21.25   |
| Cooking Area Width  | 23.5   | 35.5    | 47.5    |
| Controls            | Manual | Manual  | Manual  |
| Width               | 24     | 36      | 48      |
| Depth               | 27.5   | 27.5    | 27.5    |
| Height              | 15     | 15      | 15      |
| BTU's (per burner)  | 35,000 | 35,000  | 35,000  |
| Total BTU's         | 70,000 | 105,000 | 140,000 |
| Crated Weight (lbs) | 150    | 218     | ?       |

*Specifications subject to change without notice.*

**Distributed by:**



Rapids Wholesale Equipment  
6201 S Gateway Dr.  
Marion, IA 52302

*Specifications subject to change without notice.*

GG Revision Date: 06/18