

E-Series Beer Dispensers



BCBD1



BCBD2-2

PROJECT:

ITEM NUMBER:

MODEL NUMBER:

SPECIFICATIONS FOR: BCBD1 and BCBD2-2

- **Exterior Finish:** Powder matted steel
- **Interior Finish:** 430 stainless steel
- **Insulation:** Polyurethane (CFC Free)
- **Hardware:** Adjustable product dividers supplied. 3" diameter stainless steel beer column, hinged doors, LED lighting
- **Electrical:** 115 volt, 60 Hz, 1 phase with cord and NEMA 5-15P plug.
- **Refrigeration:** CFC free refrigerant and foam with self-contained capillary tube system
R134A refrigerant.
Solid state thermostat with temperature range: +33°F to +41°F.
- **Approvals:** UL, C-UL Safety. Certified for ANSI/NSF7 Standards (US & Canada) **

STANDARD FEATURES

- Adjustable temperature control
- Cold air channeled directly into beer column
- Automatic defrost and condensate evaporator
- Powdered matted steel exterior
- Capillary tube system
- Durable stainless steel interior walls
- LED Lighting
- Stainless steel top
- Stainless steel interior floor
- Polyurethane (CFC free) insulation
- Solid state thermostat with digital display
- 3" diameter stainless steel insulated beer column
- Temperature range: +34°F to +38°F
- Epoxy coated product dividers
- 2 Year Parts & Labor, 3 Year Compressor Warranty
- UL, C-UL Safety and ANSI/NSF7 Standards (US & Canada) **

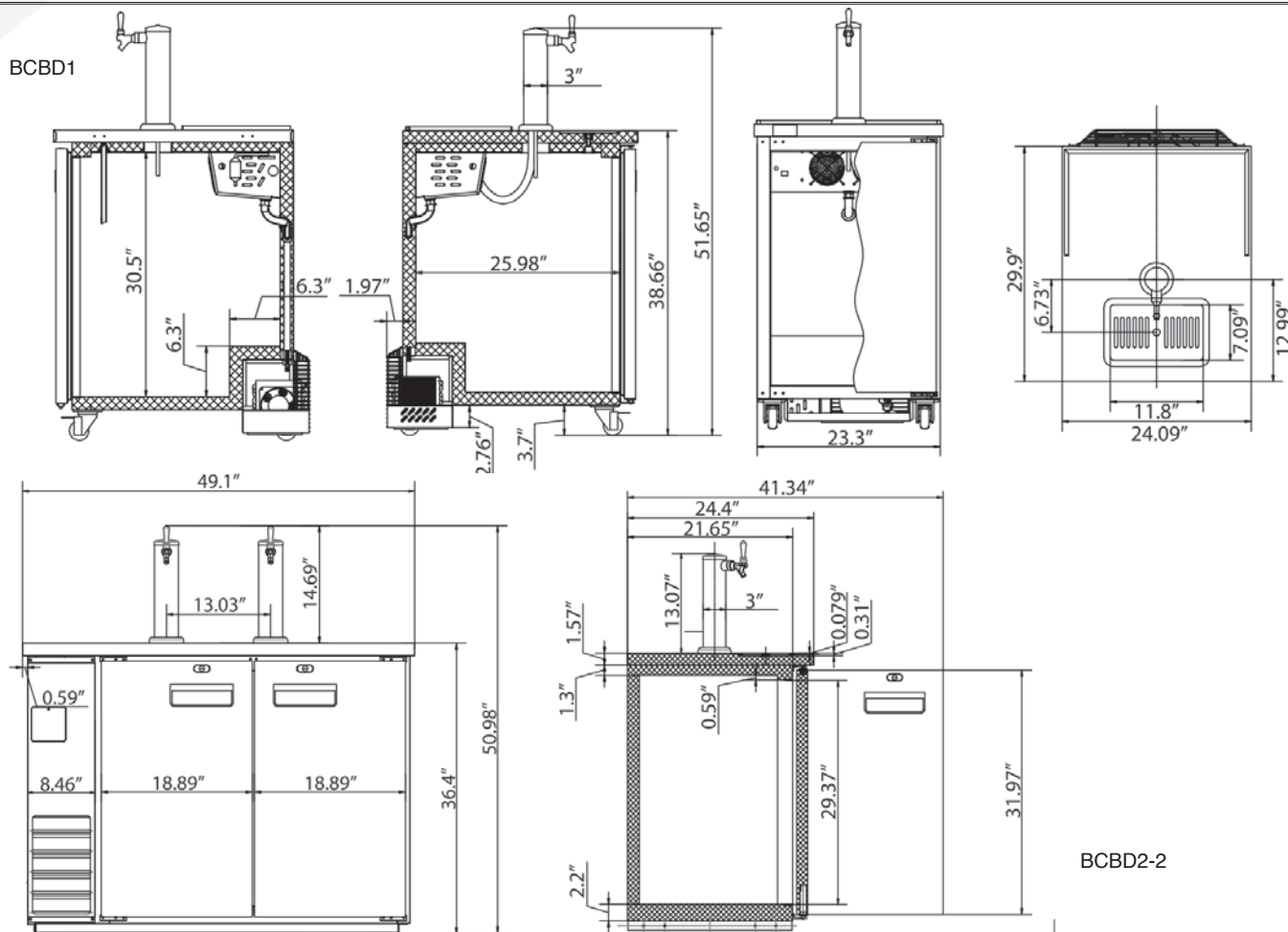
** C-UL is Underwriters Laboratories Safety Certification Mark which indicates that UL has tested the equipment to applicable CSA Standards.

** UL Sanitation is Underwriters Laboratories Sanitation Mark which indicates that UL has tested the equipment to applicable NSF Standards.

** For listings and approval reference information please consult: <http://volitionrefrigeration.com/listings-reference/>

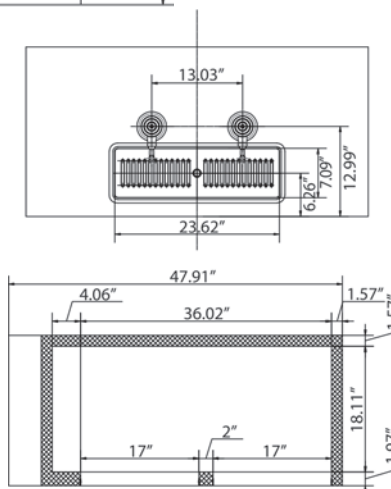


BCBD1



SPECIFICATIONS

Models	BCBD1	BCBD2-2
Crated Weight (lbs)	161	280
Height (in)	38.6	36.4
Width (in)	24.1	49.1
Depth (in)	29.9	24.4
Capacity	7.2	10.45
Number of Doors	1	2
Number of Faucets	1	2
Refrigerant	R134A	R134A
Electrical Characteristics	115/60/1	115/60/1
HP	1/8	2/5
NEMA Plug Configuration	5-15P	5-15P
Amp	2.5	3.2
Cord Length (ft)	8.2	8.2



Distributed by:

RAPIDS
Wholesale Foodservice Equipment

Rapids Wholesale Equipment
6201 S Gateway Dr.
Marion, IA 52302

Specifications subject to change without notice.